

# Fracture Rates and Lifetime Estimations of CAD/CAM All-ceramic Restorations

Journal of Dental Research  
2016, Vol. 95(1) 67–73  
© International & American Associations  
for Dental Research 2015  
Reprints and permissions:  
sagepub.com/journalsPermissions.nav  
DOI: 10.1177/0022034515608187  
jdr.sagepub.com

R. Belli<sup>1</sup>, A. Petschelt<sup>1</sup>, B. Hofner<sup>2</sup>, J. Hajt3<sup>3</sup>, S.S. Scherrer<sup>4</sup>,  
and U. Lohbauer<sup>1</sup>

## Abstract

The gathering of clinical data on fractures of dental restorations through prospective clinical trials is a labor- and time-consuming enterprise. Here, we propose an unconventional approach for collecting large datasets, from which clinical information on indirect restorations can be retrospectively analyzed. The authors accessed the database of an industry-scale machining center in Germany and obtained information on 34,911 computer-aided design (CAD)/computer-aided manufacturing (CAM) all-ceramic posterior restorations. The fractures of bridges, crowns, onlays, and inlays fabricated from different all-ceramic systems over a period of 3.5 y were reported by dentists and entered in the database. Survival analyses and estimations of future life revealed differences in performance among ZrO<sub>2</sub>-based restorations and lithium disilicate and leucite-reinforced glass-ceramics.

**Keywords:** retrospective, clinical, dental, database, dental restoration failure, ceramics

## Introduction

How long do dental all-ceramic restorations last in service before fractures? Since the early 1990s, approximately 117 clinical studies have tried to provide some insight to that question (as of April 15, 2015) (see the Appendix for details). Unfortunately, definite answers seem far out of reach, mainly because clinical studies have either small sample sizes or short follow-up periods that hamper powerful statements. The aforementioned studies, for instance, showed a mean observation period of  $5.2 \pm 3$  y in which a median number of 65 ceramic restorations per study were evaluated. Large numbers of patients are difficult to recruit and engage for very long observation periods, inevitably forcing research efforts to choose between sample size and duration. Rarely available, large-sample evaluations provide high-quality data but only over short time spans (Reiss and Walther 2000; Posselt and Kerschbaum 2003; Stoll et al. 2007). At the other end of the spectrum, long-term evaluations allow time for events to take place and unveil longer segments of survival curves. This comes at the cost of accuracy if small, nonrepresentative samples are used. Together, cohort studies of different natures are complementary and essential for validating clinical findings. For example, Stoll et al. (2007) evaluated 1,624 IPS Empress inlays and partial crowns retrospectively over a mean follow-up time of  $1.5 \pm 1.8$  y, recording 18 fractures. Frankenberger et al. (2008) evaluated inlays of the same material over 12 y and reported 12 fractures; their sample size was 96. Both studies found similar results at 1.5 y (1.1% v. 1.5% fractures, respectively). A consequence of dealing with materials with a low fracture rate, however, is that only

fragmented failure distributions are reported and future survival estimations become highly uncertain.

Meanwhile, *in vitro* tests make use of mechanical fatigue parameters to deliver forecast data (Lohbauer et al. 2002; Mitov et al. 2008; Taskonak et al. 2008; Borba et al. 2011; Gonzaga et al. 2011). These generally show that glass-ceramics with high-content glass are more susceptible to fatigue degradation than low-content glass or polycrystalline materials. Although the susceptibility of dental ceramics to stress corrosion takes center stage, microstructural aspects seem to also play a significant role in the growth of cracks under cyclic loading (Studart et al. 2007; Belli et al. 2014). Laboratory

<sup>1</sup>Research Laboratory for Dental Biomaterials, Dental Clinic I—Operative Dentistry and Periodontology, Universitätsklinikum Erlangen, Friedrich-Alexander Universität Erlangen-Nürnberg, Erlangen, Germany

<sup>2</sup>Department of Medical Informatics, Biometry and Epidemiology, Friedrich-Alexander Universität Erlangen-Nürnberg, Erlangen, Germany

<sup>3</sup>Clinical Practice, Munich, Germany

<sup>4</sup>Division of Fixed Prosthodontics-Biomaterials, University Clinics of Dental Medicine, University of Geneva, Geneva, Switzerland

A supplemental appendix to this article is published electronically only at <http://jdr.sagepub.com/supplemental>.

## Corresponding Author:

R. Belli, Research Laboratory for Dental Biomaterials, Dental Clinic I—Operative Dentistry and Periodontology, Universitätsklinikum Erlangen, Friedrich-Alexander Universität Erlangen-Nürnberg, Glueckstrasse 11, D-91054 Erlangen, Germany.  
Email: [rbeli@dent.uni-erlangen.de](mailto:rbeli@dent.uni-erlangen.de)

experiments have shown their value; for example, a good correlation has been found between the clinical survival of a leucite-reinforced glass-ceramic and lifetime predictions based on dynamic fatigue experiments (Lohbauer, Krämer, et al. 2008). Yet, downsides exist as specimen geometries, flaw populations, and testing conditions in vitro rarely resemble those of clinical scenarios.

Here, we present a different approach to gather and evaluate clinical data on fractures of dental ceramic restorations. A large dataset on 34,911 bridges, crowns, onlays, and inlays placed over a period of 3.5 y was recovered from the database of a single computer-aided design (CAD)/computer-aided manufacturing (CAM) machining center serving hundreds of dental practices, from which 491 fractures were reported. Survival statistics and lifetime estimations based on the fracture distributions were performed, providing probably the most robust clinical evidence of the sort to date.

## Methods

Searching for a large dataset on dental ceramic restorations, the authors approached a large machining center for CAD/CAM of dental prosthetic restorations in Germany. The International Organization for Standardization (ISO)-certified machining center is located in a city with a population of approximately 550,000 inhabitants and serves hundreds of dental practices in the region with ceramic restorations machined out of commercially available, prefabricated ceramic green blanks and sintered blocks. For that, multiple industry-scale machining units (of the same manufacturer) process software-generated restorations mainly out of poured models scanned in house, but also from intraoral scans provided by the dentists. All restorations are postprocessed and polished according to the same strict, defined guidelines for each restorative system. Due to internal company policies and ISO certification requirements, a strict database register of orders coming in and out are kept containing a code for each new order; detailed information regarding the type of restoration, type of material used for fabrication (commercial name and manufacturer), shade, and teeth involved; case-related details; and date of entry and delivery. For each unit produced, a full-replacement warranty is issued covering restoration fractures within 5 y from installation. The claim for restoration replacement due to fractures follows after filling a standard complaint form. On the form, the dentist provides the corresponding restoration information and a brief description of the fracture event and appearance. The form is sent back to the company, together with the available fractured piece in a closed container. Fracture events are entered in a "complaints" database, where other complaints are also inserted (e.g., shade-, anatomy-, or any quality-related issues) and linked to the original order through a new complaint code.

The database consisting of all production and complaint information within the time span from January 1, 2009 to July 31, 2012 (3.5-y interval) was released by the company to the authors under a contract on an anonymity basis and for scientific purposes only. The authors were fully blinded to patients and dental practices and processed the database by filtering the

information corresponding only to the restoration types: fixed single-unit and multiunit constructions on natural teeth, where only bridges (3-, 4-, and 5-unit), single crowns, onlays, and inlays in the posterior segment (first premolar to third molar in the maxilla or mandible) were included. Bridges with pontics up to the first premolar and abutments up to the canine were defined as eligible, and any bridge or crown on the anterior segment was excluded from the analysis. Based on the material systems employed by the machining center for the production of restorations, the following restorative systems were included: monolithic ZrO<sub>2</sub> (Zenostar; Ivoclar Vivadent, Schaan, Liechtenstein) and a trilayer system, e.max CAD on ZrO<sub>2</sub> (composed of a machined lithium disilicate overlay [e.max CAD] and a ZrO<sub>2</sub> framework, which after separately sintered are fused together using a fusion glass layer; DCM GmbH, Rostock, Germany), for bridges and single crowns; a ZrO<sub>2</sub> framework (e.max ZirCAD; Ivoclar Vivadent) to be later veneered for bridges only; e.max CAD for crowns, onlays, and inlays; and Empress CAD (leucite-based machinable glass-ceramic; Ivoclar Vivadent) for onlays and inlays. Complaints relating to deliveries previous to January 1, 2009 were removed as well as fracture events that took place during installation of the prostheses. Each valid input in the complaints database was cross-checked with the original order database through the corresponding codes at a later stage.

This study was exempt from any ethical approval from the respective institution. Kaplan-Meier survival analyses were performed for the type of restoration and type of material. Using the distribution of available events, future life was estimated with the maximum likelihood estimation (MLE) method. Details of the statistical analysis are thoroughly provided in the Appendix.

## Results

A total of 34,911 restorations were analyzed, from which 491 (1.40%) fracture events were recorded. The Appendix Table summarizes the number of restorations per restorative system and restoration type, together with the corresponding number of fractures. Teeth in the maxilla and mandible were equally affected (50.2% and 49.8%, respectively), where the first molars (42.8%) were most frequently restored, followed by the second molars (25.9%), second premolars (19.7%), first premolars (10.0%), and third molars (1.6%).

The mean evaluation periods differed for the different restorative systems and restoration types as follows (in days): bridges: 380 (maximum, 845) for e.max CAD on ZrO<sub>2</sub>, 294 (maximum, 715) for veneered ZrO<sub>2</sub>, and 92 (maximum, 239) for monolithic ZrO<sub>2</sub>; crowns: 633 (maximum, 1,270) for e.max CAD, 643 (maximum, 1,031) for e.max CAD on ZrO<sub>2</sub>, and 102 (maximum, 263) for monolithic ZrO<sub>2</sub>; onlays: 508 (maximum, 1,229) for e.max CAD and 1,000 (maximum, 1,270) for Empress CAD; and inlays: 430 (maximum, 1,214) for e.max CAD and 1,006 (maximum, 1,221) for Empress CAD. Histograms illustrating the number of restorations manufactured daily during the evaluation period are shown in the Appendix Figure. Monolithic ZrO<sub>2</sub> restorations (bridges and

**Table 1.** Results of Kaplan-Meier Survival Statistics.

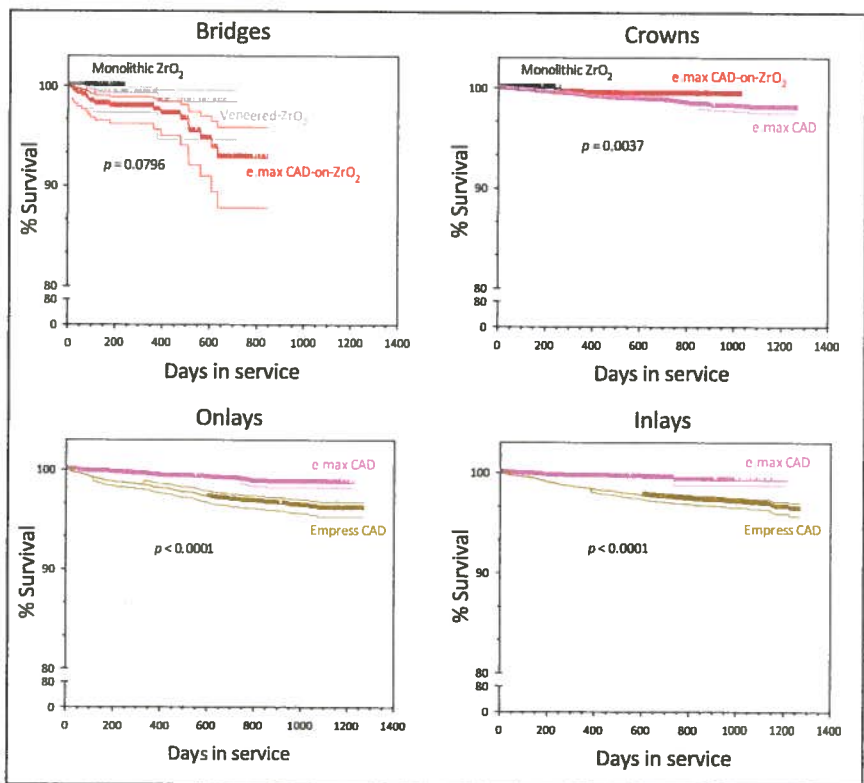
	Bridges			Inlays			Onlays			Crowns		
	HZ	95% CI	P Value	HZ	95% CI	P Value	HZ	95% CI	P Value	HZ	95% CI	P Value
e.max CAD	—	—	—	0.32	0.23–0.45	<0.0001	0.34	0.24–0.47	<0.0001	—	—	—
Empress CAD	—	—	—	—	—	—	—	—	—	—	—	—
e.max CAD on ZrO <sub>2</sub>	2.95	0.96–5.96	0.0634	—	—	—	—	—	—	0.54	0.36–0.80	0.0023
Monolithic ZrO <sub>2</sub> <sup>a</sup>	0.28/0.29	0.008–	0.484/0.159	—	—	—	—	—	—	0.34/0.31	0.07–	0.177/0.193
Veneered ZrO <sub>2</sub>	—	9.5/0.05–	1.6	—	—	—	—	—	—	—	1.6/0.05–	1.8

CAD, computer-aided design; CI, confidence interval; HZ, hazard ratio.

<sup>a</sup>Two comparisons are made, newest versus oldest/newer, where the first number is related to a comparison to the “oldest” treatment modality and the second number to the “newer” treatment modality (see the Methods section for details).

crowns) did not start to be manufactured until the end of 2011 and coincided with a discontinuation in the manufacture of e.max CAD on ZrO<sub>2</sub> crowns. Similarly, the manufacture of Empress CAD onlays and inlays dropped slowly up until the end of 2010, giving room for an increase in e.max CAD restorations.

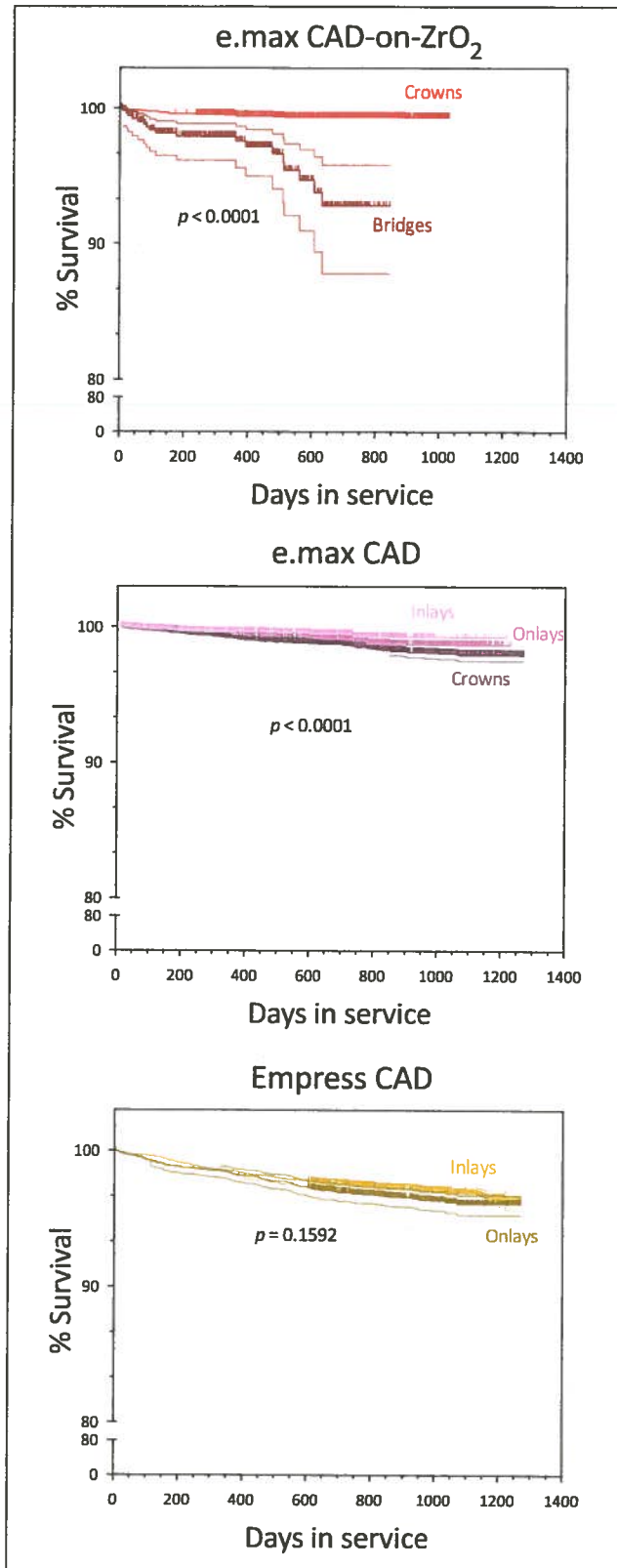
Fractures occurred with similar frequency in teeth from the upper and lower arches (45.5% and 54.5%, respectively). Of the 491 fractures, 42.2% took place on first molars, 30.8% on second molars, 19.8% on second premolars, 4.5% on first premolars, and 2.7% on third molars. The results from the Kaplan-Meier analysis are summarized in Table 1 and illustrated as survival curves in Figure 1 comparing restorative systems and in Figure 2 comparing restoration types. In summary, e.max CAD on ZrO<sub>2</sub> and veneered ZrO<sub>2</sub> bridges failed to show a significant difference in survival ( $P = 0.0634$ ) just like when compared to monolithic ZrO<sub>2</sub> due to the short evaluation period and zero number of events for the latter. Of the fractured e.max CAD on ZrO<sub>2</sub> bridges, 5 were chippings, 6 were fractures of the framework, and 11 could not be determined from the information provided. For crowns, the e.max CAD on ZrO<sub>2</sub> trilayer system performed significantly better than when e.max CAD was used as a monolithic structure ( $P = 0.0023$ ). For both onlays and inlays, e.max CAD showed a significantly higher survival rates than Empress CAD ( $P < 0.0001$ ). When comparing restorative systems (Fig. 2), e.max CAD on ZrO<sub>2</sub> performed significantly better when employed as a crown than when used for the fabrication of bridges ( $P < 0.0001$ ). The survival of e.max CAD restorations showed a trend of decreasing with an increase in restoration size in which crowns performed significantly worse than both



**Figure 1.** Kaplan-Meier survival curves comparing the restorative system for the same restoration type. P values represent a single comparison between the restorative systems.

onlays and inlays ( $P = 0.0313$  and  $P = 0.0002$ , respectively), but the latter two showed no significant differences in survival ( $P = 0.0662$ ). Likewise, no differences in survival between onlays and inlays were detected when manufactured out of Empress CAD ( $P = 0.159$ ). No replaced restoration fractured again until the end of the evaluation period.

The sensitivity analysis showed little effect of fabrication/installation time for the restoration type and type of material and negligible changes in P values when observations were censored after 2 y. On 10 occasions, 2 restorations fractured in a single patient, of a total of 20 restorations, pointing to patient-related factors or trauma events. From the complaints database,



**Figure 2.** Kaplan-Meier survival curves comparing the restoration type for the same restorative system. The  $P$  value for e.max CAD refers to a comparison between the 3 restoration types.

the frequency of fractures taking place during installation could also be assessed (these were excluded from the survival analysis). During the evaluation period, these amounted to 145 restorations (22.8% of all fractures): 9 bridges (5 e.max CAD on ZrO<sub>2</sub>, 4 veneered ZrO<sub>2</sub>), 69 crowns (34 e.max CAD, 15 e.max CAD on ZrO<sub>2</sub>), 31 onlays (15 e.max CAD, 14 Empress CAD), and 33 inlays (8 e.max CAD, 25 Empress CAD). According to available information in the digital database, a fracture of the margins was the main occurrence for crowns during installation. Unfortunately, the actual complaint forms were not made available for the authors due to privacy issues, hindering access to important additional information about the fractures.

Lifetime estimations are presented in Figure 3 as time (in days) versus cumulative percentage of the probability of failure. Also, 95% confidence intervals demonstrate the uncertainty level, which increases as the number of fractured events decreases. Estimations for veneered ZrO<sub>2</sub> bridges and monolithic ZrO<sub>2</sub> restorations were not feasible due to the low number of fracture events (0 and 3, respectively). In Table 2, the shape parameter  $\delta$  and the lifetime at failure probabilities of 10%, 50%, and 90% (and scale parameter  $\theta$ ) are given. The expected time when 10% of the restorations will fail was the shortest for e.max CAD on ZrO<sub>2</sub> bridges (3.9 y) and Empress CAD onlays and inlays (10.9 and 12.9 y, respectively). After 28.9 y, 50% of the e.max CAD on ZrO<sub>2</sub> bridges are expected to fail. Onlays and inlays produced out of e.max CAD showed significantly higher expected lifetimes ( $P < 0.0001$ ), in which 10% of the inlays will fail after 124 y and 10% of the onlays will fail after 30 y. e.max CAD crowns, however, were estimated to survive significantly shorter lifetimes than those produced using the e.max CAD on ZrO<sub>2</sub> system ( $P = 0.014$ ) in that 10% of the e.max CAD crowns will fail in 20.9 y. Crowns made from the e.max CAD on ZrO<sub>2</sub> system are expected to outlive patients long before 10% of the restorations fail.

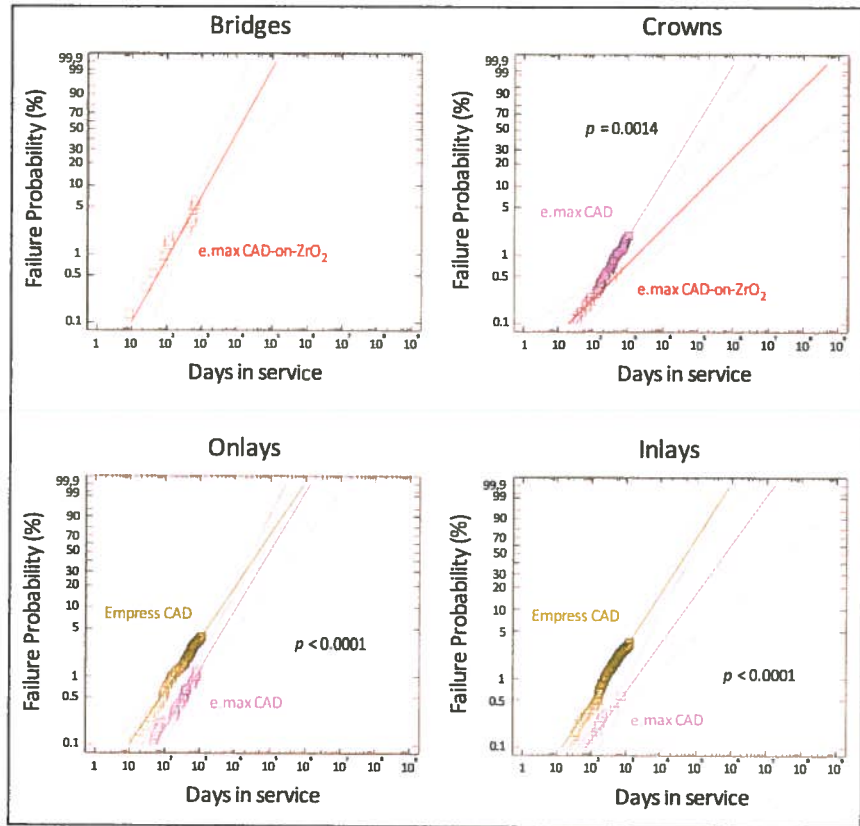
## Discussion

In our analysis, only catastrophic fractures were considered as events, "cleaned" from any other failure criteria used by conventional clinical evaluations to compute survival (such as tooth fractures, endodontic complications, etc.). Dentists were led to report fractures attracted by the warranty offered over fractures within 5 y, the basis of our assumption of a high compliance rate. A bias tending toward an underestimation of fracture rates would occur if dentists, without warning, decided not to commission the work to the same laboratory, having to pay or charge the patient for the same work twice. Likewise, any nonreported fracture would lead to an overestimation of restoration survival. Fracture is a reason that usually drives a patient to return to the dentist, and probably to the same dentist if the work is under warranty. Patients moving away or changing dentists would not pop up in the data as dropouts and could not be censored. Since the overall fracture rate was small (1.4%), the impact of a probable small percentage of unknown dropouts (who experienced a fracture) is expected to be minimal (if 10% of fractures were unknown, this would reflect a 0.16%

increase in the overall failure rate). Possible effects of covariates relating to the patient (e.g., age, gender) and dentist (e.g., dental practice, operator) could not be assessed due to the unavailability of data (patient and dentist information were not disclosed due to confidentiality issues). Most importantly, the known effect of the operator (Frankenberger et al. 2009) might have been diluted due to the high number of practices (>100) attended by the machining center.

Additionally, precise classifications of the nature of fractures were often missing, sometimes failing to distinguish, for example, chippings from framework fractures. Nevertheless, since all reported fractures necessarily demanded replacement, we can assume that chipping events in veneered ZrO<sub>2</sub> bridges might also have occurred, but their consequences were probably not to the degree of severity of those taking place in e.max CAD on ZrO<sub>2</sub> bridges. In such a sintered trilayer system, thermal effects and internal stresses might play a role and relate to the observed high fracture rates. Still, concrete reasons for failure are not clear at this point. To address this, thorough fractographic analyses of multiple recovered fracture cases will be presented in a separate study. Regarding veneered ZrO<sub>2</sub> bridges, a clinical study with a relatively large sample size ( $n = 99$ ) on 3- and 4-unit veneered ZrO<sub>2</sub> bridges from Rinke et al. (2013) recorded 4 framework fractures and 4 chippings requiring replacement (8% catastrophic fractures, 23% chippings, and overall 83.4% survival including biological and other complications) after 7 y. According to our lifetime estimations, the same 8% of fractures is expected at 3 y for e.max CAD on ZrO<sub>2</sub> bridges. For veneered ZrO<sub>2</sub> bridges, we recorded 0.82% fractures (3 framework fractures only) during a mean period of 9.5 mo (maximum, 23 mo), which was a similar annual framework fracture rate found by Rinke et al. (2013) (~0.6%). For monolithic ZrO<sub>2</sub> bridges, no fractures were observed during a mean observation interval of 3 mo (maximum, 8 mo), a trend that supports the CARES/LIFE estimations of Fischer et al. (2003) of near zero failures of 3-unit monolithic ZrO<sub>2</sub> bridges at 10 y.

In contrast, crowns made out of the e.max CAD on ZrO<sub>2</sub> system showed statistically superior survival than when e.max CAD was used unsupported by a framework. The expected time for a failure probability of 10% amounted to 20.9 y for monolithic e.max CAD crowns, whereas after the same period, only about 2.2% of e.max CAD on ZrO<sub>2</sub> crowns might come to experience fractures. For the sake of comparison, a theoretical



**Figure 3.** Lifetime estimations for the Weibull distribution using the maximum likelihood estimation method.

lifetime estimation performed by Lekesiz (2014) based on experimental static and fatigue parameters obtained a 1.7% failure rate at 10 y for lithium disilicate crowns made from Empress 2 (Ivoclar Vivadent), the hot-pressed similar version of e.max CAD with longer crystals. With a shorter crystal size and same glass percentage by volume (vol%), e.max CAD showed in vitro a 60% higher strength degradation rate under cyclic fatigue than the longer-crystal lithium disilicate variant (Belli et al. 2014). In clinical trials, e.max CAD crowns have shown fracture rates of 3.7% ( $n = 41$ ) at 4 y (Reich and Schierz 2013) and 0% ( $n = 62$ ) at 2 y (Fasbinder et al. 2010). Monolithic ZrO<sub>2</sub> crowns seem to follow the trend of their bridge analogs, and no fractures were recorded during a mean time of 3.3 mo (maximum, 8.5 mo). The long-term clinical performance of monolithic ZrO<sub>2</sub> dental prostheses has not yet been assessed.

When fabricated out of e.max CAD blocks, onlays and inlays showed significantly higher survival rates than crowns, but no significant differences in survival between onlays and inlays were seen for either e.max CAD and Empress CAD. Higher survival rates and estimated lifetimes for e.max CAD onlays and inlays in comparison to those fabricated out of Empress CAD probably reflect their differences in mechanical properties. Flexural strength and fracture toughness of Empress CAD have been measured to means of  $137.5 \pm 23.3$  MPa (Charlton et al. 2008) and  $1.4 \pm 0.07$  MPa $\sqrt{m}$  (Uno et al. 2012),

**Table 2.** Weibull Shape ( $\delta$ ) and Scale Parameters ( $\theta$ ) and Lifetime Estimation (in y) at Failure Probabilities of 10%, 50%, and 90%.

	Bridges				Inlays				Onlays				Crowns			
	$\delta$	$\theta_{10\%}$	$\theta_{50\%}$	$\theta_{90\%}$	$\delta$	$\theta_{10\%}$	$\theta_{50\%}$	$\theta_{90\%}$	$\delta$	$\theta_{10\%}$	$\theta_{50\%}$	$\theta_{90\%}$	$\delta$	$\theta_{10\%}$	$\theta_{50\%}$	$\theta_{90\%}$
e.max CAD	—	—	—	—	0.71	124.7	$1.7 \times 10^3$	$9.3 \times 10^3$	0.86	30.3	267.7	$1.07 \times 10^3$	0.85	20.9	191.3	783.1
Empress CAD	—	—	—	—	0.80	12.9	134.3	598.3	0.77	10.9	126.2	600.1	—	—	—	—
e.max CAD on ZrO <sub>2</sub>	0.92	3.9	29.8	100.5	—	—	—	—	—	—	—	—	0.52	404.5	$1.5 \times 10^4$	$1.5 \times 10^5$
Monolithic ZrO <sub>2</sub>	—	—	—	—	—	—	—	—	—	—	—	—	—	—	—	—
Veneered ZrO <sub>2</sub>	—	—	—	—	—	—	—	—	—	—	—	—	—	—	—	—

CAD, computer-aided design.

respectively, while the same properties for e.max CAD show 2 times these values (Pollington and van Noort 2012). Leucite, the crystal phase of Empress CAD, is not very effective in promoting crack deflection (Apel et al. 2008), a toughening mechanism common in lithium disilicate glass-ceramics (Lohbauer, Müller, et al. 2008; Dittmer et al. 2014; Belli et al. 2015), but also, the high glass phase content (~60 vol% in Empress CAD) plays an important role. Empress CAD inlays were estimated to reach 10% of fractured restorations already at 12.9 y of service and onlays the same percentage 2 y earlier. These estimations correlate very well to clinical findings. After 12 y, onlays and inlays of the hot-pressed version of Empress CAD (IPS Empress; Ivoclar Vivadent) have shown 12 fractures out of 96 restorations (12.5% failure) (Frankenberger et al. 2008). Within the same time frame (12 y), we estimated a 10.5% failure probability for Empress CAD onlays and 9.5% for Empress CAD inlays. For a similar glass-ceramic (Evopress; Wegold, Wendelstein, Germany), 3 fractures were recorded from a total of 250 inlays after a mean period of 2.7 y (~0.5% annual failure rate) (Lange and Pfeiffer 2009). Conversely, the time that e.max CAD onlays are expected to show 10% of failure may take 30.3 y and inlays significantly longer, a difference revealed only when assuming an underlying failure distribution (Weibull).

Patients will only experience 50% of restoration failure during their life for bridges made of the e.max CAD on ZrO<sub>2</sub> system and only after 29.8 y. Clearly, the uncertainty of such fracture probability estimations increases with time (widening the 95% confidence interval for  $\delta$  and  $\theta$ ) (Fig. 3) and decreases as the number of recorded fractures increases. That is, estimations based on data from Empress CAD or e.max CAD crowns present a higher degree of certainty, especially for relevant failure probabilities below 50%.

## Conclusions

Adding to retrospective evaluations and practice-based research, large datasets on the survival of ceramic restorations might be available in unusual places, such as CAD/CAM machining centers that maintain good data management. From one machining center, we recovered information on the fracture rates of nearly 35,000 posterior ceramic restorations, which showed altogether 1.4% of fractures over 3.5 y. The higher fracture rate for bridges made of e.max CAD on ZrO<sub>2</sub> in comparison to crowns made of the same system might suggest some

susceptibility to bending stresses or design aspects. Monolithic ZrO<sub>2</sub> prostheses showed promising clinical performance with no failures within the first 8.5 mo of placement. The lithium disilicate, machinable glass-ceramic e.max CAD showed significantly better performance than the leucite-based Empress CAD for onlays and inlays, highlighting the role of the microstructure in the fracture process. Overall, the evaluated restorative systems showed very good clinical performance.

## Author Contributions

R. Belli, contributed to data acquisition, analysis, and interpretation, drafted the manuscript; A. Petschelt, contributed to data interpretation, critically revised the manuscript; B. Hofner, contributed to data interpretation and analysis, critically revised the manuscript; J. Hajtó, contributed to conception and data interpretation, critically revised the manuscript; S.S. Scherrer, contributed to conception, design, and data interpretation, critically revised the manuscript; U. Lohbauer, contributed to conception, design, data acquisition, analysis, and interpretation, drafted and critically revised the manuscript. All authors gave final approval and agree to be accountable for all aspects of the work.

## Acknowledgments

The authors received no financial support and declare no potential conflicts of interest with respect to the authorship and/or publication of this article.

## References

- Apel E, Bernard A, Höland M, Müller R, Kappert H, Rheinberger V, Höland W. 2008. Phenomena and mechanisms of crack propagation in glass-ceramics. *J Mech Behav Biomed Mater.* 1(4):313–325.
- Belli R, Geinzer E, Muschweck A, Petschelt A, Lohbauer U. 2014. Mechanical fatigue degradation of ceramics versus resin composites for dental restorations. *Dent Mater.* 30(4):424–432.
- Belli R, Wendler M, Zorzini J, da Silva LH, Petschelt A, Lohbauer U. 2015. Fracture toughness mode mixity at the connectors of monolithic 3Y-TZP and LS2 dental bridge constructs. *J Eur Ceram Soc.* 35(13):3701–3711.
- Borba M, de Araújo MD, Fukushima KA, Yoshimura HN, Cesar PF, Griggs JA, Della Bona A. 2011. Effect of the microstructure on the lifetime of dental ceramics. *Dent Mater.* 27(7):710–721.
- Charlton DG, Roberts HW, Tiba A. 2008. Measurements of selected mechanical properties of 3 machinable ceramic materials. *Quintessence Int.* 39(7):573–579.
- Dittmer M, Ritzberger C, Schweiger M, Rheinberger V, Wörle M, Höland W. 2014. Phase and microstructure formation and their influence in strength of two types of glass-ceramics. *J Non-Cryst Solids.* 384:55–60.
- Fasbinder DJ, Dennison JB, Heyes D, Neiva G. 2010. A clinical evaluation of chairside lithium disilicate CAD/CAM crowns: a two-year report. *J Am Dent Assoc.* 141(Suppl 2):10S–14S.

- Fischer H, Weber M, Marx R. 2003. Lifetime prediction of all-ceramic bridges by computational methods. *J Dent Res.* 82(3):238–242.
- Frankenberger R, Reinelt C, Petschelt A, Krämer N. 2009. Operator vs. material influence on clinical outcome of bonded ceramic inlays. *Dent Mater.* 25(8):960–968.
- Frankenberger R, Taschner M, García-Godoy F, Petschelt A, Krämer N. 2008. Leucite-reinforced glass ceramic inlays and onlays after 12 years. *J Adhes Dent.* 10(5):393–398.
- Gonzaga CC, Cesar PF, Miranda WG Jr., Yoshimura HN. 2011. Slow crack growth and reliability of dental ceramics. *Dent Mater.* 27(4):394–406.
- Lange RT, Pfeiffer P. 2009. Clinical evaluation of ceramic inlays compared to composite restorations. *Oper Dent.* 34(3):263–272.
- Lekesiz H. 2014. Reliability estimation for single-unit ceramic crown restorations. *J Dent Res.* 93(9):923–928.
- Lohbauer U, Krämer N, Petschelt A, Frankenberger R. 2008. Correlation of in vitro fatigue data and in vivo clinical performance of a glass-ceramic material. *Dent Mater.* 24(1):39–44.
- Lohbauer U, Müller FA, Petschelt A. 2008. Influence of surface roughness on mechanical strength of resin composite versus glass ceramic materials. *Dent Mater.* 24(2):250–256.
- Lohbauer U, Petschelt A, Greil P. 2002. Lifetime predictions of CAD/CAM dental ceramics. *J Biomed Mater Res.* 63(6):780–785.
- Mitov G, Lohbauer U, Rabbo MA, Petschelt A, Pospiech P. 2008. Investigations of subcritical crack propagation of the Empress 2 all-ceramic system. *Dent Mater.* 24(2):267–273.
- Pollington S, van Noort R. 2012. Manufacture, characterization and properties of novel fluocanasite glass-ceramics. *J Dent.* 40(11):1006–1017.
- Posselt A, Kerschbaum T. 2003. Longevity of 2328 chairside Cerec inlays and onlays. *Int J Comput Dent.* 6(3):231–248.
- R Core Team. 2015. R: a language and environment for statistical computing. Vienna: R Foundation for Statistical Computing. [accessed 2015 Sep 3]. <http://www.R-project.org/>.
- Reich S, Schierz O. 2013. Chair-side generated posterior lithium disilicate crowns after 4 years. *Clinical Oral Invest.* 17(7):1765–1772.
- Reiss B, Walther W. 2000. Clinical long-term results of 10-year Kaplan-Meier analysis of Cerec restorations. *Int J Comput Dent.* 3(1):9–23.
- Rinke S, Gersdorff N, Lange K, Roediger M. 2013. Prospective evaluation of zirconia posterior fixed partial dentures: 7-year clinical results. *Int J Prosthodont.* 26(2):164–171.
- Stoll R, Cappel I, Jablonski-Momeni A, Pieper K, Stachniss V. 2007. Survival of inlays and partial crowns made of IPS Empress after a 10-year observation period and in relation to various treatment parameters. *Oper Dent.* 32(6):556–563.
- Støtvig JG. 2014. Censored Weibull distributed data in experimental design. Master's thesis. Trondheim: Norwegian University of Science and Technology.
- Stuart AR, Filser F, Kocher P, Gauckler LJ. 2007. In vitro lifetime of dental ceramics under cyclic loading in water. *Biomaterials.* 28(17):2695–2705.
- Taskanak B, Griggs JA, Mecholsky JJ, Yan JH. 2008. Analysis of subcritical crack growth in dental ceramics using fracture mechanics and fractography. *Dent Mater.* 24(5):700–707.
- Uno M, Nonogaki R, Fujieda T, Ishigami H, Kurashi M, Kamemizu H, Wakamatsu N, Doi Y. 2012. Toughening of CAD/CAM all-ceramic crowns by staining slurry. *Dent Mater J.* 31(5):828–834.

CLINICAL SCIENCE

## Survival rate of lithium disilicate restorations at 4 years: A retrospective study



Taiseer A. Sulaiman, BDS,<sup>a</sup> Alex J. Delgado, DDS, MS,<sup>b</sup> and Terence E. Donovan, DDS<sup>c</sup>

Ceramic restorations are frequently placed in contemporary dental practices. Some of these restorations are primarily placed for esthetic reasons. Others are placed because the cost of noble metals has increased considerably and most ceramic alternatives are less expensive than metal ceramic restorations.<sup>1</sup>

Many of the new ceramic systems have impressive physical and mechanical properties.<sup>2</sup> However, clinical longevity cannot be accurately predicted based on these properties or from in vitro load-to-failure tests.<sup>3-6</sup> Most of these systems have been brought to market with almost no independent clinical testing. Ninety-five percent of metal ceramic restorations are intact and functioning at 11 years.<sup>7</sup> Dr Peter Scharer suggested that before a clinician uses a new ceramic system, the manufacturer should provide data from independent clinical trials that indicate 95% survival at 3 or preferably 5 years.<sup>8</sup>

The problem facing clinicians is that data from independent clinical trials are rarely available in the first 5 years after the introduction of a new ceramic system, and manufacturers are quite aggressive in their marketing strategies. The problem for the manufacturers is that clinical trials are both expensive and time-consuming and that competition in the marketplace is fierce.

### ABSTRACT

**Statement of problem.** Ceramic restorations are frequently being placed due to the esthetic demand and the cost of noble metals that has increased considerably. One major disadvantage of ceramic restoration is failure of the material due to fracture by crack propagation. In vitro studies are of little clinical significance and in vivo studies are too short to support clinical success.

**Purpose.** The purpose of this retrospective study was to evaluate the failure rate of lithium disilicate restorations (monolithic and layered) at 4 years.

**Material and methods.** Data were collected over 45 months from 2 commercial laboratories. Restorations were categorized into monolithic restorations and layered restorations. Each category was further classified into complete coverage single crowns, fixed dental prostheses, e.max veneers, and inlay/onlay restorations. Failure rates were compared and analyzed using Chi-square ( $\alpha=.05$ ).

**Results.** A total of 21 340 restorations were evaluated in this study and included 15 802 monolithic restorations and 5538 layered restorations. The failure rate for single crown monolithic restorations was 0.91% and was 1.83% for single crown layered restorations. For fixed dental prostheses, 4.55% of monolithic restorations failed. For e.max veneers, 1.3% of monolithic veneers fractured and 1.53% of layered veneers fractured. Of the inlay/onlay restorations group, 1.01% of monolithic restorations fractured.

**Conclusion.** In the short term (45 months), restorations fabricated with the lithium disilicate material (IPS e.max) had relatively low fracture rates. Layered single crowns fractured at approximately 2 times the rate of monolithic crowns. (*J Prosthet Dent* 2015;114:364-366)

This study was undertaken to provide useful data relative to the early survival rates of lithium disilicate materials, specifically one popular system, the IPS e.max restoration (Ivoclar Vivadent). IPS e.max is a lithium disilicate glass-based material, in which small needle-shaped crystals compress the surrounding glass matrix during cooling. Therefore, IPS e.max has a high flexural strength (400 MPa)<sup>9</sup> and has become popular in recent years. It is provided in two different forms, the more popular being monolithic IPS e.max, which is milled or pressed and then stained. Monolithic crowns tend to be relatively strong, because only a single material is involved and there is no veneering layer.

<sup>a</sup>Visiting scholar, Department of Operative Dentistry, School of Dentistry, University of North Carolina, Chapel Hill, NC; and Doctoral student, Department of Prosthetic Dentistry, Institute of Dentistry, University of Turku, Turku, Finland.

<sup>b</sup>Clinical Assistant Professor, Department of Restorative Sciences Division of Operative Dentistry, University of Florida, Gainesville, Fla.

<sup>c</sup>Professor and Section Head, Biomaterials Sciences, Department of Operative Dentistry, University of North Carolina, Chapel Hill, NC.



## Clinical Implications

Restorations fabricated with the lithium disilicate material (IPS e.max) had relatively low fracture rates in the short term (45 months).

However, the esthetic result with monolithic crowns is not equivalent to that achieved with layered restorations, in that there is high surface reflectivity and no internal coloration. The other type of IPS e.max is the layered restoration with a milled or pressed lithium disilicate core and a thermal expansion/contraction coefficient matched veneering porcelain. The layered restoration has better esthetics but significantly reduced strength. Zhao et al<sup>10</sup> reported in a load-to-failure test of IPS e.max crowns that the monolithic anatomic design shows superior fracture resistance behavior compared with bilayered IPS e.max crowns. A sliding-contact fatigue test of IPS e.max conducted by the same group of researchers showed that cyclic loading is an accelerating factor contributing to fracture for monolithic IPS e.max crowns but not bilayered crowns.<sup>4</sup> Because ceramic failure is enhanced by mechanically driven tests in an aqueous environment, the mode of failure and impact of fatigue testing is still not fully justified; typical in vitro testing of ceramic material does not challenge the material as in a clinical situation.<sup>11</sup>

A retrospective study of 860 anterior and posterior lithium disilicate restorations demonstrated a 95% success rate in the medium term (3 to 5 years).<sup>12</sup> In a recent systematic review,<sup>13</sup> the short-term (1 to 5 years) and moderate-term (5 to 10 years) survival rates of lithium disilicate single crowns and fixed dental prostheses were analyzed. Only two studies were randomized controlled trials, and 5 were prospective studies in the included search criteria for articles between 1998 and 2013. The review revealed excellent short-term cumulative survival rates of 97.8% for single crowns, while the cumulative survival rates for fixed prostheses was 78.1%. Limited evidence of success was reported for the medium term. However, systematic reviews of short-term or underpowered studies can result in misleading conclusions.<sup>14-16</sup>

For this study, it was assumed that clinicians who experienced a premature failure with a recently introduced ceramic system that would require remaking the restoration would return it to the laboratory for warranty purposes. It was also assumed that patients experiencing an early restoration failure would return to the dentist who provided that restoration.

To obtain information regarding the early clinical performance of both types of IPS e.max, two major dental laboratories were approached for data related to remakes. Both the laboratories had database systems that permitted

**Table 1.** Failure rate of monolithic restoration and layered restorations by type of restoration

Type of Restoration	Monolithic Restoration			Layered Restoration		
	Units	Failure	Failure Rate (%)	Units	Failure	Failure Rate (%)
SC	11 603	106	.91	4162	76	1.83
FDP	1494	68	4.55	0	0	0
EV	1612	21	1.3	1376	21	1.53
IO	1093	11	1.01	0	0	0

SC, single crowns; FDP, fixed dental prostheses; EV, e.max veneer; IO, inlay/onlay.

the identification of remakes related specifically to the fracture of IPS e.max restorations.

The null hypothesis was that no difference would be found in the failure rate by fracture of porcelain between monolithic and layered lithium disilicate restorations.

## MATERIAL AND METHODS

The data for this study were obtained from two commercial dental laboratories in the U.S. The data were collected from the laboratory database systems, which were designed to track the number of returned restorations. Failures included fracture of the restorative material that required a remake of the restoration. Data regarding the restorations included in this study were collected continuously for 45 months (June 2009 to February 2014).

A printed assessment sheet was used to record the type of restoration and the percentage of failures for each type. The restorations were categorized into monolithic restorations and layered restorations. Each category was further classified into complete coverage single crowns, fixed dental prostheses, e.max veneers, and inlay/onlay restorations. Restorations that were returned to the laboratory for poor marginal fit, shade match, or contour were excluded from the study.

The failure rates of monolithic and layered lithium disilicate restorations were compared and analyzed with Chi-square ( $\alpha=.05$ ).

## RESULTS

A total of 21 340 restorations were evaluated in this study and included 15 802 monolithic restorations and 5538 layered restorations. Thus, approximately 3 times as many monolithic restorations were evaluated as layered prostheses. The complete data for the failure rate of the monolithic IPS e.max restorations and the results of the layered IPS e.max restorations are reported in [Table 1](#).

Only 0.91% of single unit monolithic IPS e.max crowns and 1.83% of layered IPS e.max single crowns failed over the time period. The failure rate of the two types of single crowns (monolithic vs layered) showed a significant difference ( $P<.001$ ) ([Table 2](#)). The combined failure rate of these two restorations was 1.15%.

For fixed dental prostheses, 4.55% of monolithic restorations failed. No layered fixed dental prostheses were

**Table 2.** Comparison of failure rates between monolithic single crowns and layered single crowns (IPS e.max)

Type of Restoration	Total	Failure	%
LR	4162	76*	1.83
MR	11 603	106	0.91
LR and MR	15 765	182	1.15

LR, layered restoration; MR, monolithic restoration.

\*Statistically significant difference:  $P < .001$ .

placed. For inlays and onlays, 1.01% of monolithic restorations fractured. No layered inlays or onlays were placed. For the e.max veneers, the monolithic form showed a lower failure rate (1.3%) than the layered form (1.53%).

## DISCUSSION

This study was designed to discover data that might help clinicians choose ceramic materials by providing information on the number of early or premature failures that occur with a popular ceramic system. The IPS e.max system was chosen for this study because it is a commonly used system with promising physical properties and optical characteristics that mimic the natural tooth.<sup>1,17</sup>

This study does not replace the need for properly designed, randomized, controlled clinical trials, but does provide data that show that, in the short term, restorations fabricated with IPS e.max do not experience a high rate of catastrophic failure.

The cause of failure in this study cannot be attributed solely to the material, because the fabrication process and clinical tooth preparation can play a major role in failure. A recent review of clinical tooth preparation<sup>18</sup> reported that the most important parameters for tooth preparation have changed and concluded that these parameters are rarely met. Clinical studies critically examining the causes of restoration failure are lacking, which can limit the prediction of outcomes.<sup>19,20</sup> Methods of analyzing the failure for ceramic restoration material, thickness, and load positions have been proposed so as to predict the success and longevity of ceramic restorations.<sup>11,21</sup>

An advantage of the method used in this study was that a large sample size was scrutinized in a short time. Data on more than 21 000 lithium disilicate restorations were analyzed. This method is practitioner-based and provides information on what happens with a new system when used by a large cross-section of dental practitioners in contrast to outcomes achieved in a controlled university-based study.

The data clearly show that the majority of restorations being placed are monolithic IPS e.max restorations. Monolithic single crowns had a lower failure rate than layered single crowns, although the failure rates of both are well below the 5% stipulated by Schärer. The failure rate for fixed dental prostheses was higher, but again was slightly below the 5% failure rate.

## CONCLUSION

Within the limitations of this retrospective study, it is concluded that, in the short term (45 months), single tooth restorations fabricated with a lithium disilicate material (IPS e.max) had relatively low fracture rates. Layered single crowns fractured at approximately twice the rate of monolithic crowns, but the fracture rate was still low.

## REFERENCES

- Christensen GJ. The ceramic restoration dilemma: where are we? *J Am Dent Assoc* 2011;142:668-71.
- Denry I, Kelly JR. Emerging ceramic-based materials for Dentistry. *J Dent Res* 2014;93:1235-42.
- Kelly JR. Clinically relevant approach to failure testing of all-ceramic restorations. *J Prosthet Dent* 1999;81:652-61.
- Zhao K, Wei YR, Pan Y, Zhang XP, Swain MV, Guess PC. Influence of veneer and cyclic loading on failure behavior of lithium disilicate glass-ceramic molar crowns. *Dent Mater* 2014;30:164-71.
- Dhima M, Assad DA, Volz JE, An KN, Berglund LJ, Carr AB, et al. Evaluation of fracture resistance in aqueous environment of four restorative systems for posterior applications. Part 1. *J Prosthodont* 2013;22:256-60.
- Dhima M, Carr AB, Salinas TJ, Lohse C, Berglund L, Nan KA. Evaluation of fracture resistance in aqueous environment under dynamic loading of lithium disilicate restorative systems for posterior applications. Part 2. *J Prosthodont* 2014;23:353-7.
- Leempoel PJ, Van Rossum GM, de Hann AF. Survival studies of dental restorations: criteria, methods and analyses. *J Oral Rehabil* 1989;16:387-94.
- Schärer P. All-ceramic crown systems: clinical research versus observation in supporting claims. *Signature* 1997;4:1.
- Holand W, Schweiger M, Frank M, Rheinberger V. A comparison of the microstructure and properties of the IPS Empress 2 and the IPS Empress glass-ceramics. *J Biomed Mater Res* 2000;53:297-303.
- Zhao K, Pan Y, Guess PC, Zhang XP, Swain MV. Influence of veneer application behavior of lithium-disilicate-based ceramic crowns. *Dent Mater* 2012;28:653-60.
- Rekow D, Thompson VP. Engineering long-term clinical success of advanced ceramic prostheses. *J Mater Sci Mater Med* 2007;18:47-56.
- Zarone FG, Dell'Acqua G, Caminitano G, De Lorenzi M, Mosca A, Sorrentino R. Clinical evaluation of 860 anterior and posterior lithium disilicate restoration: retrospective study with a mean follow-up of 3 years and a maximum observational period of 6 years. *Int J Prosthodont* 2014;34:165-77.
- Pieger S, Salman A, Bidra AS. Clinical outcomes of lithium disilicate single crowns and partial fixed dental prostheses: a systematic review. *J Pros Dent* 2014;112:22-30.
- Kern M. Comments regarding Pieger S, Salman A, Bidra AS. Clinical outcomes of lithium disilicate single crowns and partial fixed dental prostheses: a systematic review. *J Prosthet Dent* 2014;112:22-30. *J Prosthet Dent* 2015;113:259.
- Bidra AS. A response to M. Kern regarding Pieger S, Salman A, Bidra AS. Clinical outcomes of lithium disilicate single crowns and partial fixed dental prostheses: a systematic review. *J Prosthet Dent* 2014;112:22-30. *J Prosthet Dent* 2015;113:260-1.
- Lang JA, Tall GE, Aghaloo M, et al. A systematic review of long-term clinical performance: systematic reviews of zirconia single crowns. *J Prosthet Dent* 2014;111:476-84.
- Wang F, Tall GE, Aghaloo M, et al. The longevity of dental ceramics with different thicknesses. *J Prosthet Dent* 2013;110:14-20.
- Tiu J, Al-Awadi B, Wang F, et al. Clinical tooth preparations and associated complications of zirconia single crowns. *J Prosthet Dent* 2015;113:175-84.
- Heintze SD, Papan V. Survival of zirconia and metal supported fixed dental prostheses: a systematic review. *J Dent* 2012;40:223-302.
- Amorim FJ. Survival of zirconia crowns: a meta-analysis of clinical studies. *J Dent Res* 2012;91:102-11.
- Rekow FB, Heintze M, Jansen JA, Thompson VP, Zhang G. Evidence analysis of van der Stoep et al. *J Dent Res* 2014;93:1235-42.

### Corresponding author:

Dr Alex J. Delgado  
1395 Center Drive  
PO Box 100415  
Gainesville, FL 32610-0415  
Email: [adelgado@dentistry.com](mailto:adelgado@dentistry.com)

Copyright © 2015 by the Editorial Council for *The Journal of Prosthetic Dentistry*.